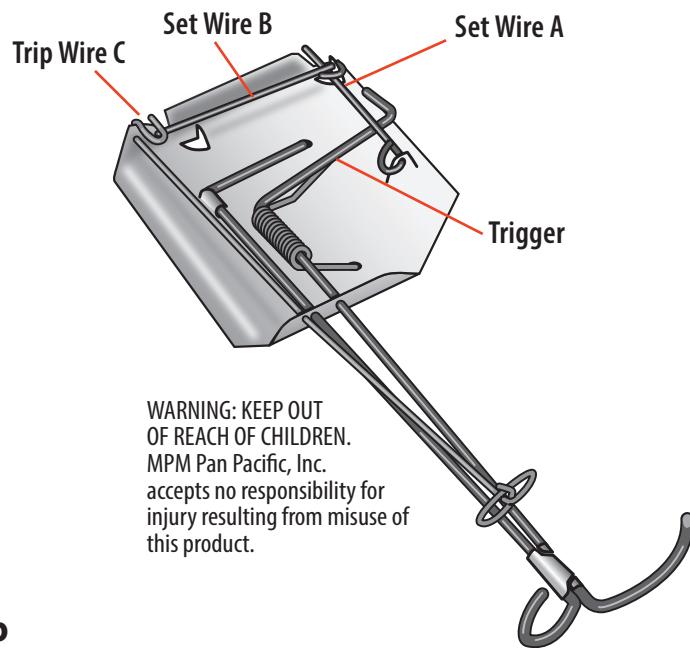


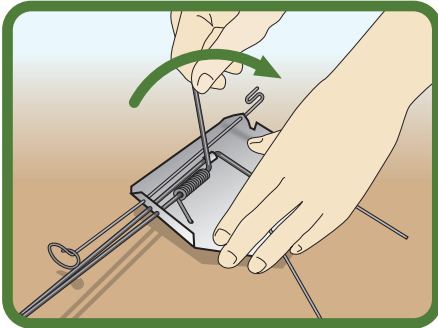


SUREFIRE[®] MOLE+ GOPHER TRAPS

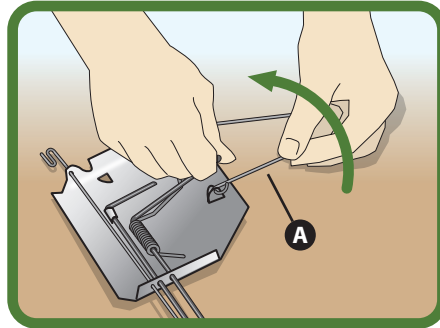


WARNING: KEEP OUT
OF REACH OF CHILDREN.
MPM Pan Pacific, Inc.
accepts no responsibility for
injury resulting from misuse of
this product.

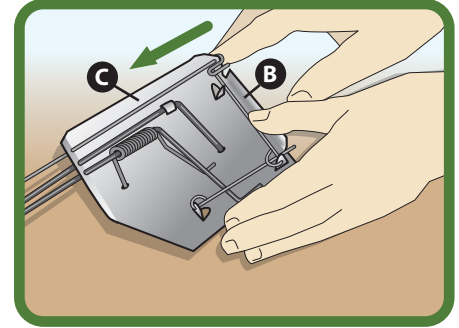
How to set your GONZO[®] Surefire[®] Trap



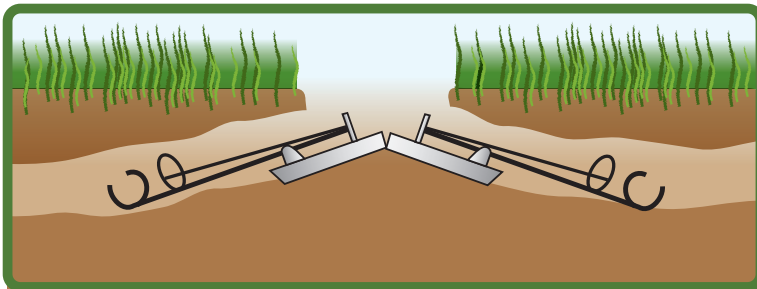
Hold the surefire trap securely with both hands. Pull the spring loaded **Trigger** counter clockwise from right to left.



Hold the spring loaded **Trigger** firmly in place. Place **Set Wire A** across the spring loaded **Trigger**.



Place **Set Wire B** over Set Wire A. Slide **Trip Wire C** over Set Wire B. Refer to illustration.



Trap placement in tunnel systems

Moles:

Feeding runways:

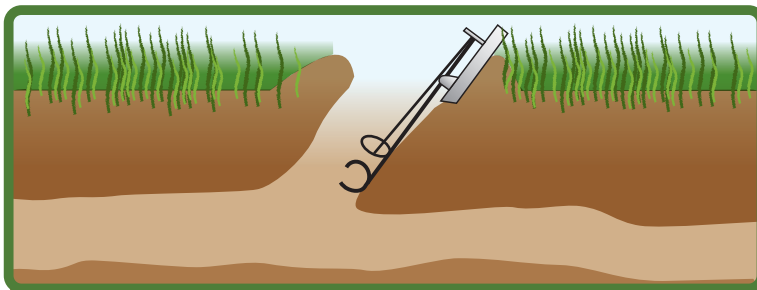
1. Locate active feeding runway tunnel (see illustration).
2. Remove soil with trowel and place traps in opposite direction.
3. Keep tunnels open and check traps daily for activation.

Mole Mounds / Soil Plug:

1. Locate active tunnel (note: fresh mounds indicate active tunnel).
2. Remove soil with trowel or spade to open tunnel.
3. Place trap in open tunnel. Check traps daily as moles are active at night and early morning hours.
4. Remove mole from activated trap, reset and re-install. Non activated trap indicates inactive tunnel.

Gophers:

1. Locate active tunnel (note: fresh mounds indicate active tunnel)
2. Remove soil with trowel or spade to expose open tunnel
3. Place trap in tunnel. Main tunnels require two traps set in opposite directions (see illustration). Check daily as gophers are active at night and early morning hours.
4. Remove Gopher From Activated Trap, Reset And Re-install. Non Activated Trap Indicates Inactive Tunnel.



www.GoGetGonzo.com

MPM Pan Pacific, Inc. • PO Box 1253, West Covina, CA 91793 • Toll Free: 855-464-6696

Got Moles & Gophers - Get Gonzo!