

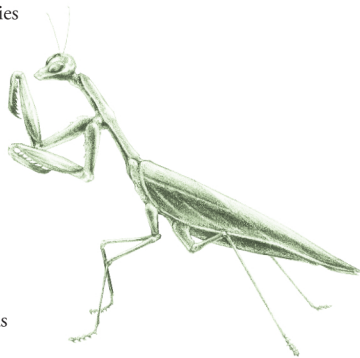
Good Bug Blend

Use: Beneficial insects are a natural army of pest control allies and it is important to provide them with suitable living conditions if you expect their help.

In order to reproduce, beneficial insects need nectar and pollen. If they do not find these in your field (and they are very particular about which flowers they want), they will leave and may not return. We designed our mix to include plants that are proven hosts to specific wild as well as introduced beneficials, such as predatory mites and wasps, ladybugs, lacewings, syrphids, tachnids, predacious beetles and many more.

Since the mix blooms nearly year round, Good Bug Blend should be planted in areas which can go a little wild, such as field borders, ditchbanks, fence rows, etc.

Planting: Drill or broadcast seed at 10-15 lb/acre (.5 lb/1,000 sq ft) in any but the coldest months of the year. Blooms begin 45-90 days after planting and will continue for years. This mix performs best with regular drip, sprinkler or furrow irrigation during dry periods.



Provide Habitat for Beneficial Insects