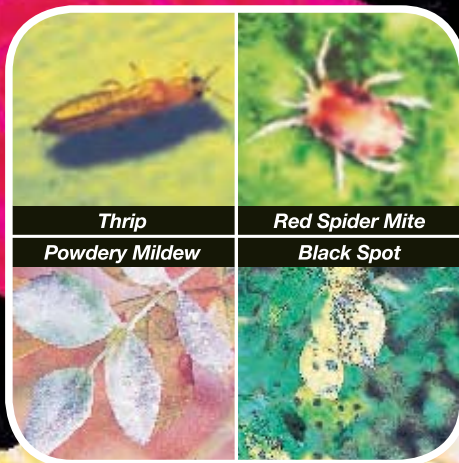


Hi-Yield®



**DUSTING
WETTABLE**

SULFUR



**USE AS A DUST
OR SPRAY.**

Controls Black Spot, Powdery Mildew, Leaf Spot, And Rust On Roses.

Controls Listed Diseases And Insects On Shrubs, Flowers, Vegetables And Fruits.

Controls Thrips, Rust Mites, Red Spider Mites And Two Spotted Mites On Citrus.

Controls Chiggers In Home Lawns.

ACTIVE INGREDIENTS:	
Sulfur	90.0%
INERT INGREDIENTS: 10.0%	
TOTAL:	100.0%

KEEP OUT OF REACH OF CHILDREN

CAUTION

See Side Panel For Additional
Precautionary Statements

NET WEIGHT 4 LBS. (1.8 kg)

32188

FIRST AID

If Inhaled:	<ul style="list-style-type: none">• Move person to fresh air.• If person is not breathing, call 911 or an ambulance, then give artificial respiration preferably mouth-to-mouth if possible.• Call a Poison Control Center, or doctor for further treatment advice.
If On Skin Or Clothing:	<ul style="list-style-type: none">• Take off contaminated clothing.• Rinse skin immediately with plenty of water for 15-20 minutes.• Call a Poison Control Center, or doctor for further treatment advice.
If In Eyes:	<ul style="list-style-type: none">• Hold eye open and rinse slowly and gently with water for 15-20 minutes.• Remove contact lenses, if present, after the first 5 minutes, then continue rinsing eye.• Call a Poison Control Center, or doctor for further treatment advice.
If Swallowed:	<ul style="list-style-type: none">• Call a Poison Control Center, or doctor immediately for treatment advice.• Have the person sip a glass of water if able to swallow.• Do not induce vomiting unless told to do so by the Poison Control Center or doctor.• Do not give anything by mouth to an unconscious person.

Have the product container with you when calling a Poison Control Center or doctor, or going for treatment.

In the event of a medical or chemical emergency contact



North America 1-800- 255-3924 or Worldwide Intl. + 01- 813-248-0585

PRECAUTIONARY STATEMENTS HAZARDS TO HUMANS AND DOMESTIC ANIMALS

CAUTION: May be harmful if swallowed, inhaled or in eyes. Avoid contact with skin, eyes or clothing. Wash thoroughly after handling and before eating or smoking. Keep children and pets off treated areas for at least 24 hours and until this material has washed into the soil.

ENVIRONMENTAL HAZARDS

To protect the environment, do not allow pesticide to enter or run off into storm drains, drainage ditches, gutters or surface waters. Applying this product in calm weather when rain is not predicted for the next 24 hours will help to ensure that wind or rain does not blow or wash pesticide off the treatment area.

NOTE: Buyer assumes all risks of use, storage, or handling of this material not in strict accordance with directions given herewith. Voluntary Purchasing Groups, Inc., warrants that this material conforms to the chemical description on the label and suited for the purposes stated on the label. The limit of any liability incurred shall be the purchase price paid by the User or Buyer.

DIRECTIONS FOR USE

It is a violation of Federal Law to use this product in a manner inconsistent with its labeling.

Not for use on Plants being grown for sale or other commercial use, or for commercial seed production, or for research purposes. For use on Plants intended for aesthetic purposes and being grown in Home Lawns and Gardens.

1. WHAT IS THIS PACKAGE FOR?

This product provides effective and economical control of listed plant diseases and insects. May be used as a dust or spray.

2. HOW DO YOU USE IT?

When used as a dust, punch out perforated tab on top of shaker can and rotate lid to dust setting. Apply to all plant surfaces to thoroughly cover. When used as a spray, mix 4 tablespoons per each 1 gallon of water used. Spray to cover thoroughly all plant surfaces. Do not re-enter treated areas for at least 24 hours after application is made.

ROSES, SHRUBS, FLOWERS (As A Fungicide And Insecticide)

For Black Spot, Leaf Spot, Powdery Mildew, Thrips and Mites on Roses. Begin spraying when new growth starts in the Spring. Repeat at 7 day intervals and reapply after rainfall. **For Disease and Insect control** on Shrubs, Flowers and Ornamentals begin application when Diseases appear and repeat at 5-10 day intervals and after rains. **For control of Powdery Mildew, Thrips and Mites** on Azalea, Alder, Button Bush, Catalpa, Cosmos, Crepe Myrtle, Dahlia, Daisy, Delphinium, Aster, Calendula, Dogwood, Euonymus, Gladiolus, Golden Fleece, Hibiscus, Holly, Hydrangeas, Lady's Mantel, Ligustrum, Lilac, Petunia, Poplars, Silver Vine, Spirea, Sunflower, Sweet Pea, Verbena, Violets, Willows, Carnations, Cedar, Cherry Laurel, Chrysanthemums, Hollyhock, Juniper, Simlax and Spruce. **For control of Leaf Spot, Thrips, and Mites** on Calendula, Cedar, Cherry Laurel, Chrysanthemum, Clematis, Columbine, Foxglove, Hollyhock English Ivy, Juniper, Laurel, Sage, Simlax, Snapdragons, and Spruce. **For control of Rust, Thrips, and Mites** on Asters, Carnations, Chrysanthemums, Hollyhock and Snapdragon.

VEGETABLES (As A Fungicide)

For control of Powdery Mildew on Beans, Peas, Broccoli, Brussels Sprouts, Cabbage, Cauliflower. **For control of Rust** on Beans and Peas. Begin applications at first sign of Disease. Repeat applications at 7-10 day intervals. NOTE: Sulfur may injure certain varieties of Beans. **For control of Powdery and Downy Mildew and Botrytis Blight** on Onions. Begin application before Diseases are expected to appear. Repeat as necessary. Do not use on Cucurbits (Cucumbers, Cantaloupes, Melons, Squash) or Tung.

FRUITS (As A Fungicide And Insecticide)

APPLE, PEAR: For Powdery Mildew and Scab. Reduce dosage to 1 tablespoon per gallon of water if hot weather threatens. **For Disease Control** on Apples apply from pre-pink through cover periods. For Pears apply at prebloom, bloom, petal fall and cover periods.

PEACH: For Brown Rot, Scab. Apply in pink, bloom, shuck, cover and pre-harvest sprays.

CHERRY: For Brown Rot, Leaf Spot. Apply in pink, bloom, petal fall, shuck, cover and post-harvest sprays.

PLUM, PRUNE: For Brown Rot, Leaf Spot. Apply in pink, bloom, shuck, cover and pre-harvest sprays.

CITRUS: For Brown Rot. Apply according to State recommendations. **For Rust Mite, Thrips, Red Spider Mites, Two-spotted Spider Mites.** Begin applications at first signs of damage and repeat as necessary. Rust Mites should be controlled at all times of the year in order to prevent russetting of fruit and greasy spots on leaves.

COMMON CHIGGER CONTROL

For control of Chiggers In The Yard, dust over the entire Lawn, Flower Garden, Shrubs and any place the Chiggers may be hiding. This should be done a day or two before protection is desired and should be repeated at weekly intervals. The contents of this package will cover from 1,500 to 2,000 square feet.

IMPORTANT: Do not use within 2 weeks of an Oil Spray treatment, on Citrus within 3 to 6 weeks. Use only according to State recommendations. Sulfur may burn foliage when temperature is high (90-95°F).

3. HERE ARE THE RESULTS YOU MAY EXPECT!

When used as directed, this product will provide effective and economical control of listed Diseases and Insects and thus promote healthy, lush growth.

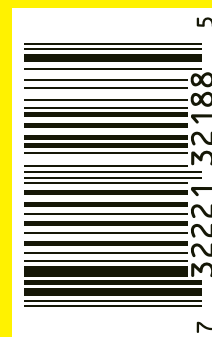
STORAGE AND DISPOSAL

PESTICIDE STORAGE: Keep out of reach of children and pets. Store in original containers only. Store in cool, dry place and avoid excess heat.

PESTICIDE DISPOSAL: If Empty: Non-refillable container. Do not reuse this container. Place in trash or offer for recycling if available. **If partly filled:** Call your local solid waste agency for disposal instructions. Never place unused product down any indoor or outdoor drain.

Manufactured by:
HI-YIELD CHEMICAL COMPANY
230 FM 87
BONHAM, TEXAS 75418
Visit Us At: www.hi-yield.com
EPA Reg. No. 7401-188-34911

EPA Est. No. 7401-TX-01



100M-3-1110-5